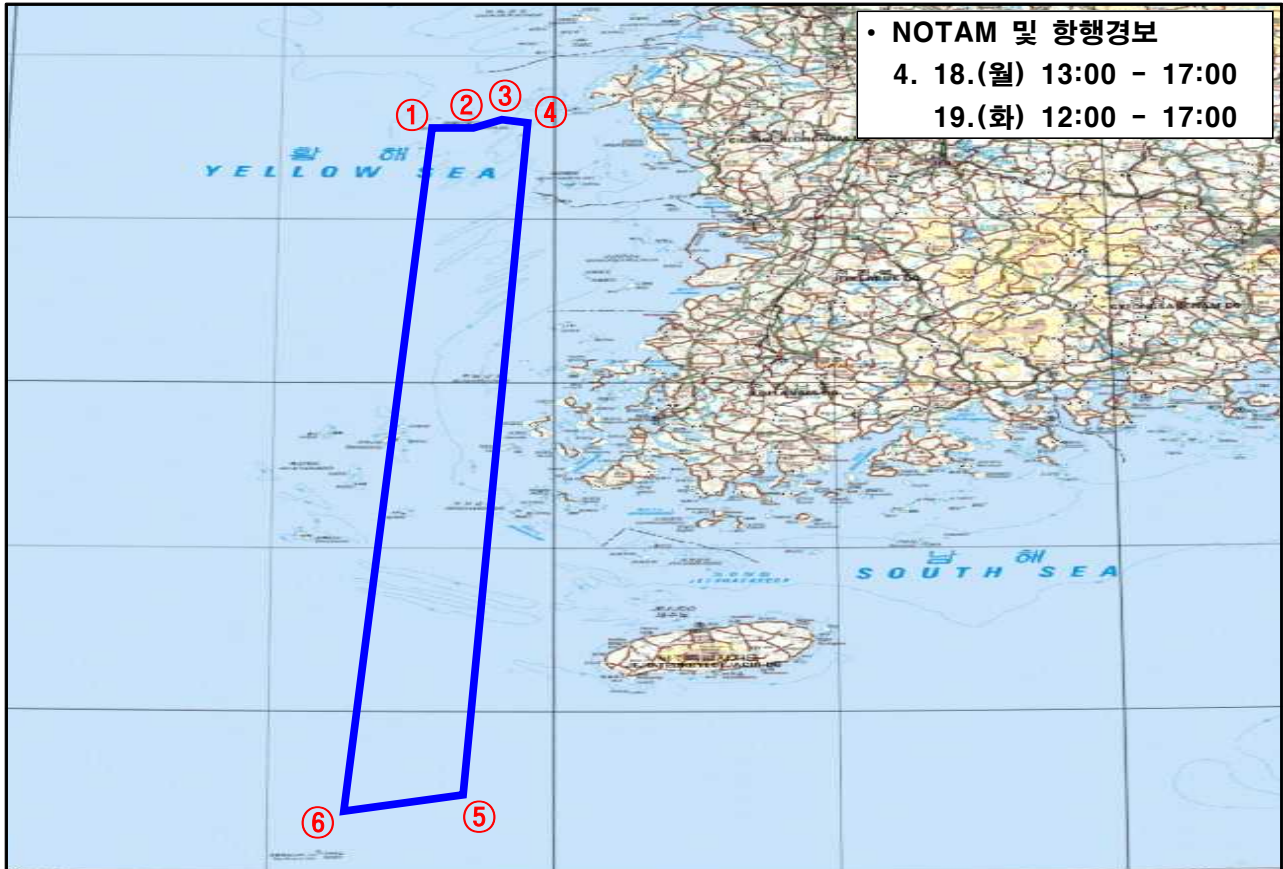
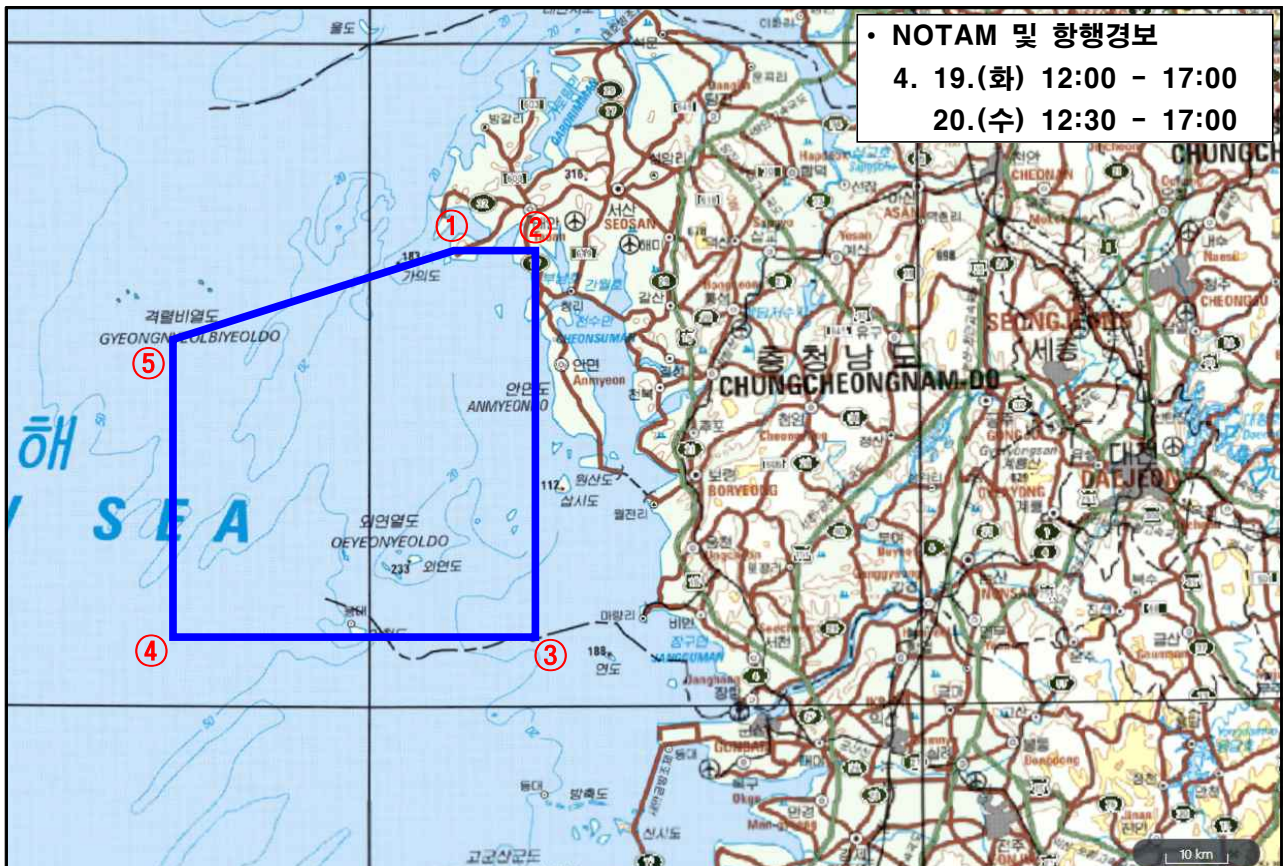


'22년 4월 3주 비상설 해상사격장 사격훈련 안전조치 구역도

1. 안면도 서방 ~ 제주도 서남방 해상 : 4. 18.(월), 19.(화)



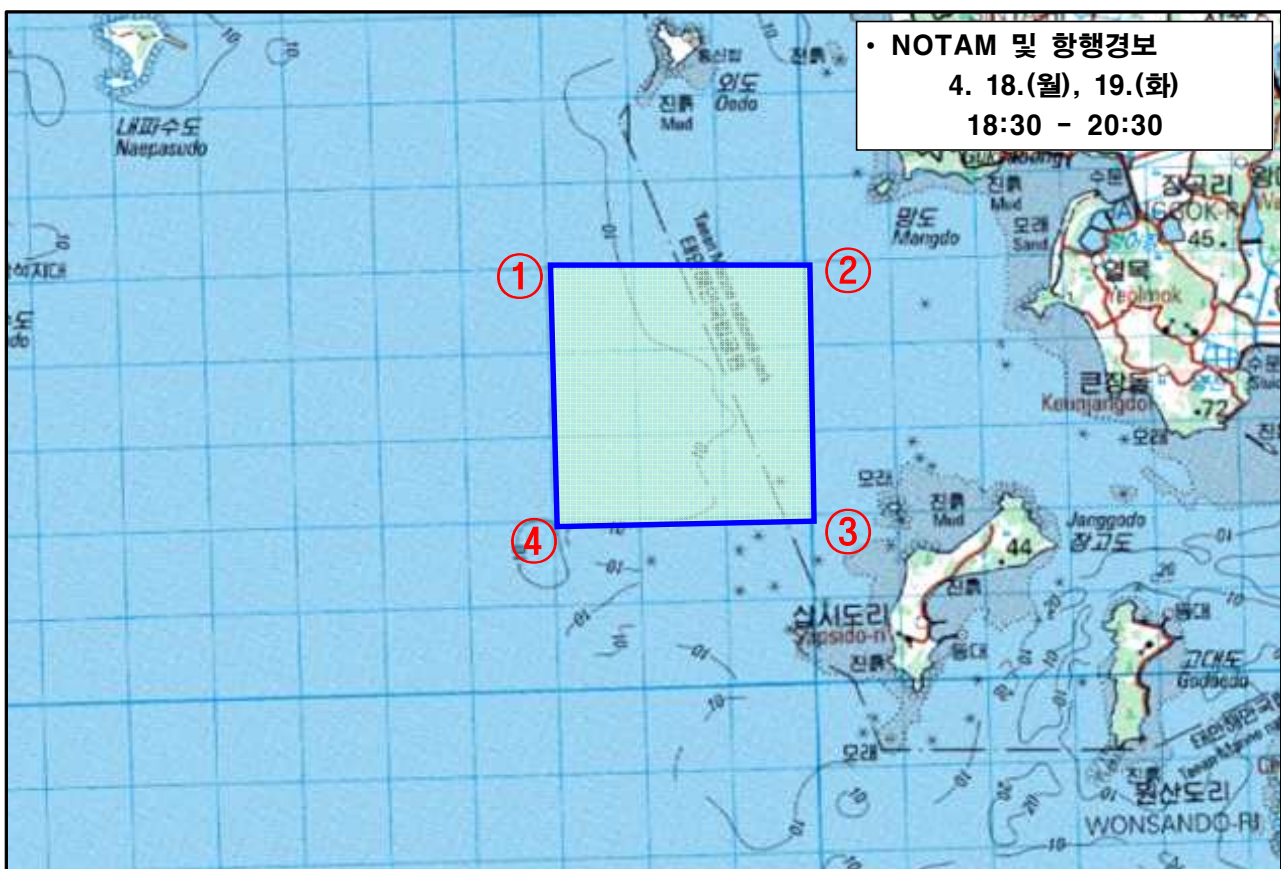
2. 태안 ~ 어청도 인근 해상 : 4. 19.(화), 20.(수)



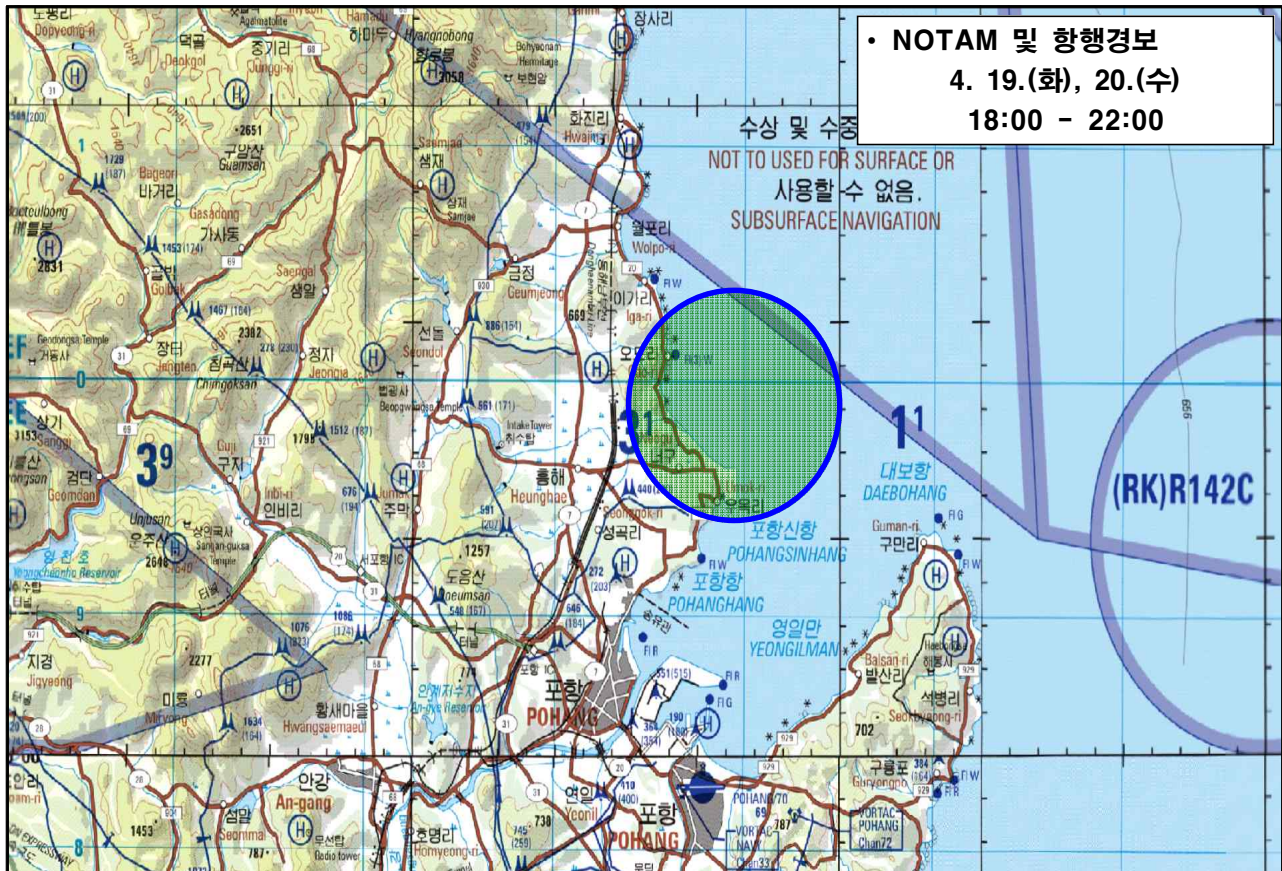
3. 창원 구산면 전방 해상 : 4. 18.(월), 19.(화)



4. 보령 장고도 인근 해상 : 4. 18.(월), 19.(화)



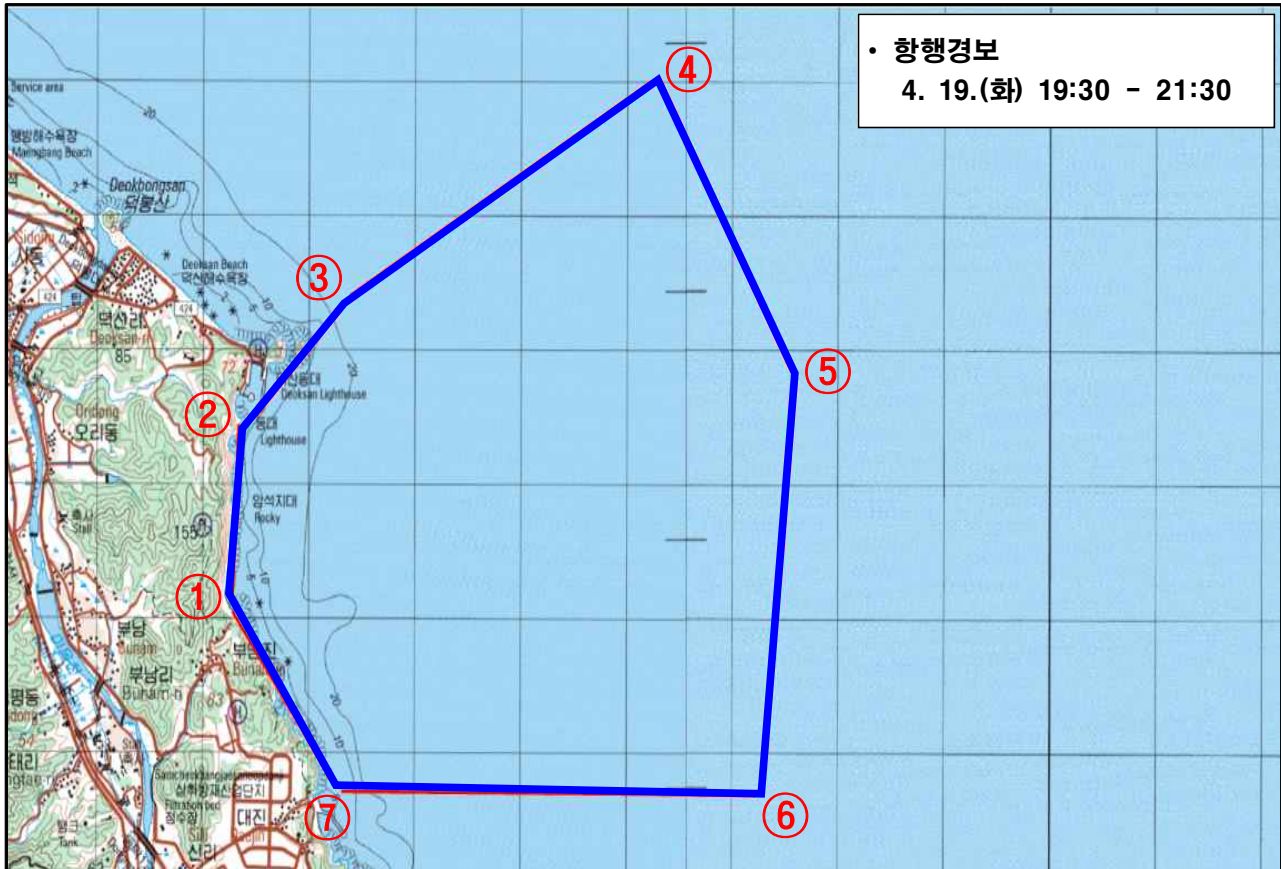
5. 포항시 북구 흥해읍(칠포) 전방 해상 : 4. 19.(화), 20.(수)



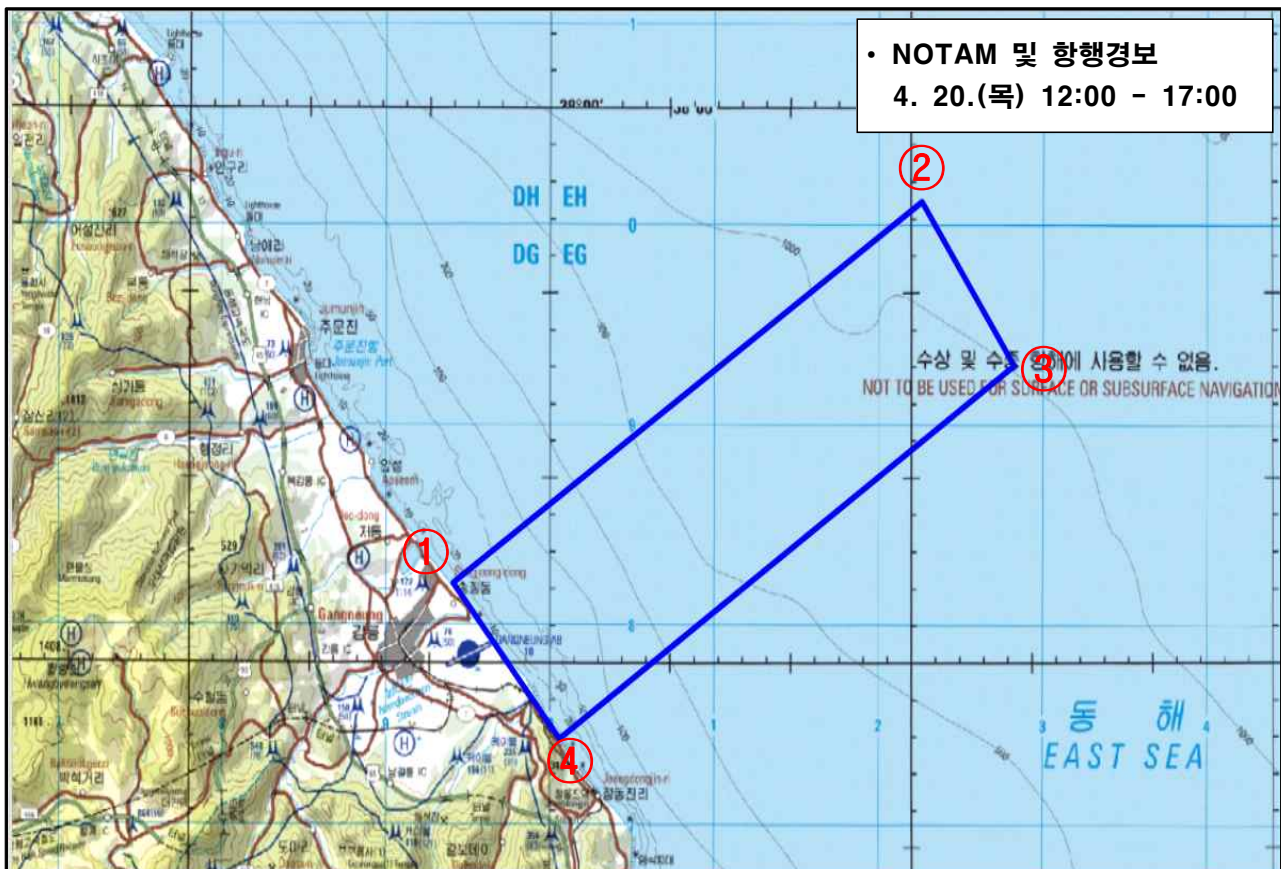
6. 강릉 연곡면(사천) 전방 해상 : 4. 19.(화)



7. 삼척 부남리 전방 해상 : 4. 19.(화)



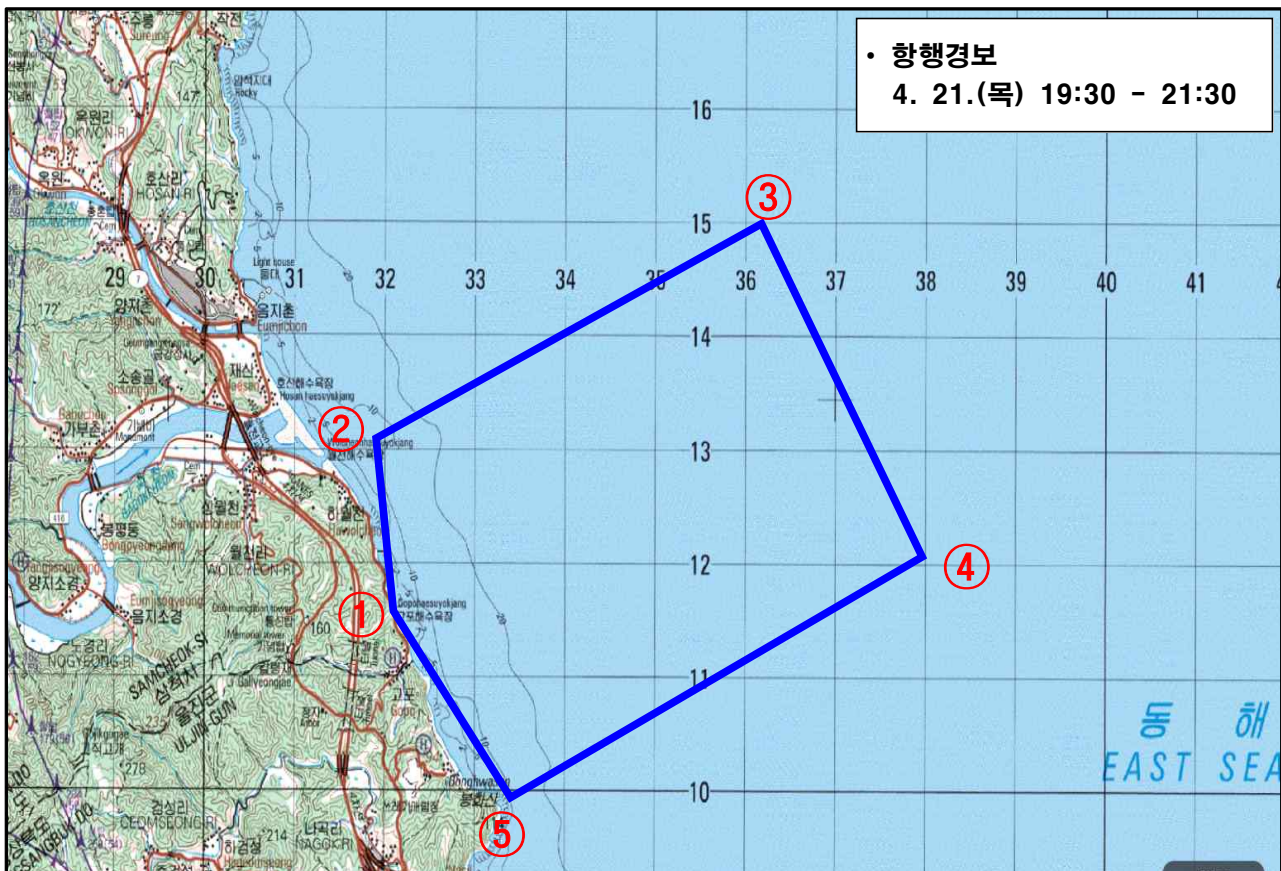
8. 강릉 하시동 전방 해상 : 4. 20.(수)



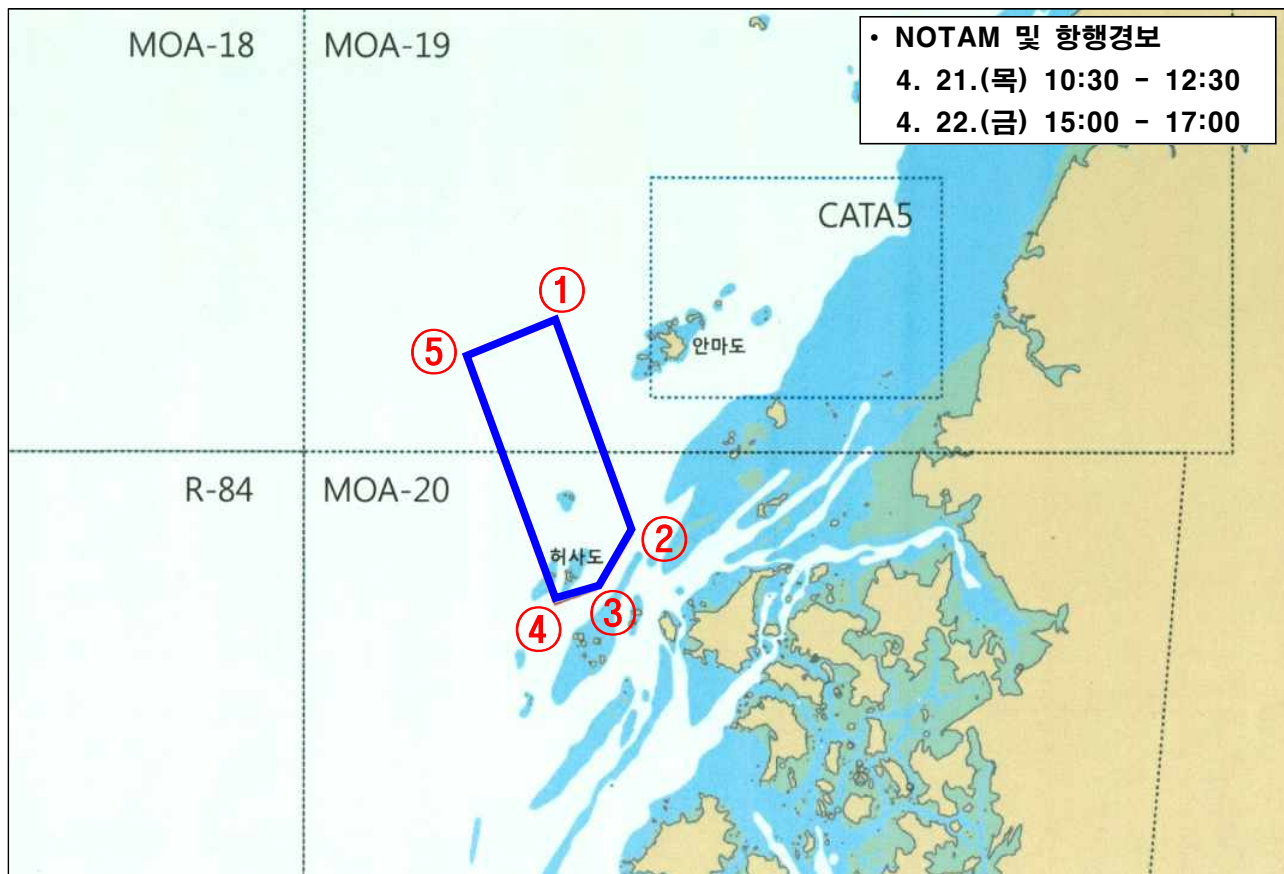
9. 강릉 옥계 전방 해상 : 4. 21.(목)



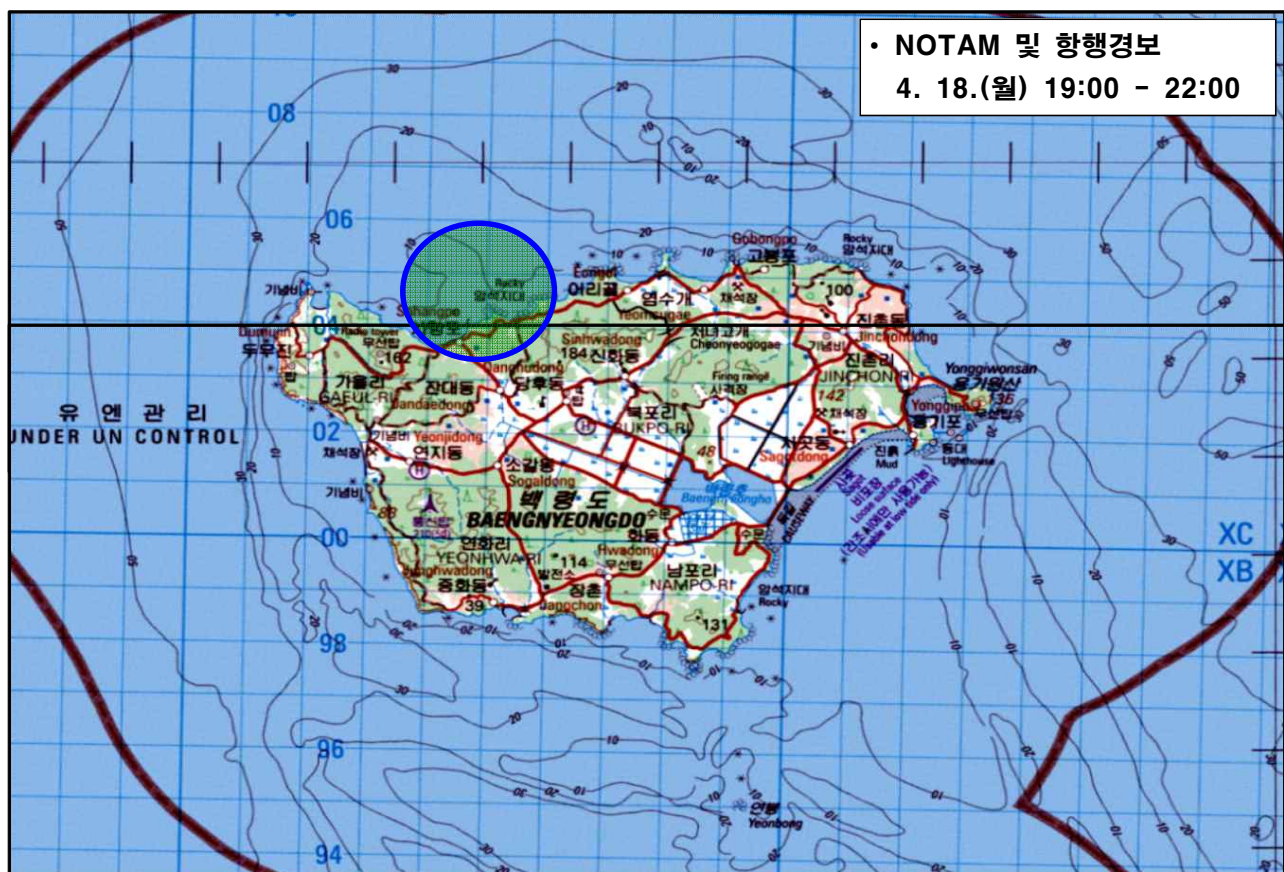
10. 울진군 나곡리(고포) 전방 해상 : 4. 21.(목)



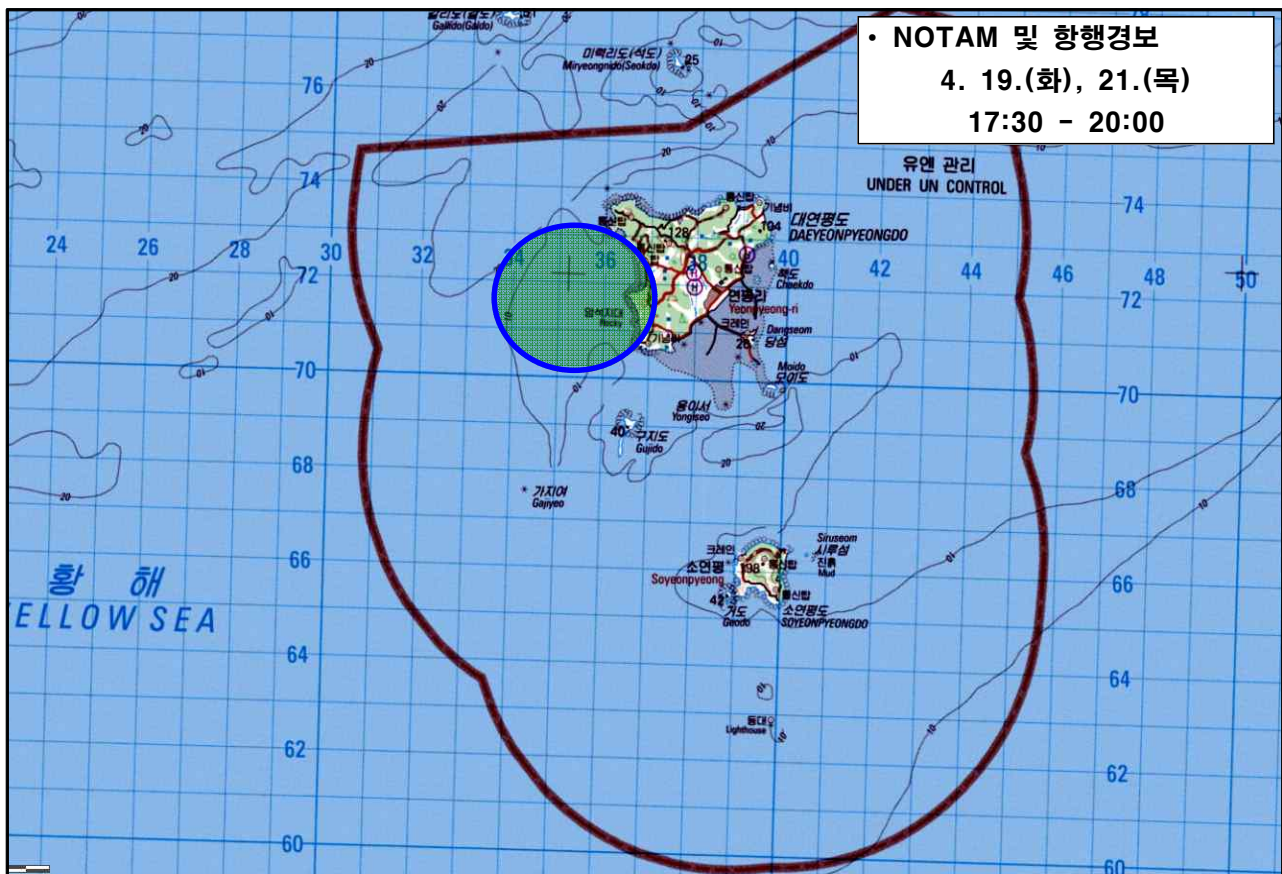
11. 서해안 허사도 북방 해상 : 4. 21.(목), 22.(금)



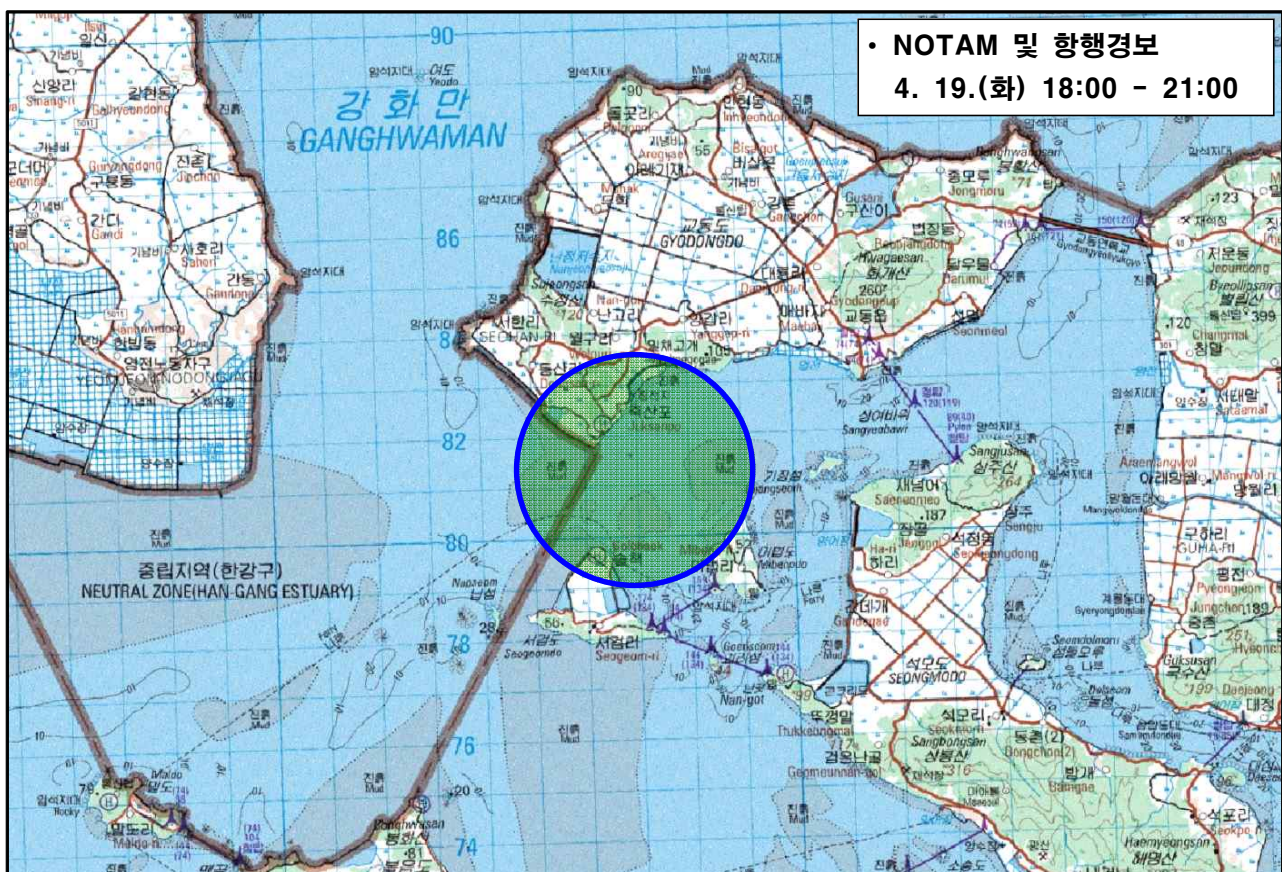
12. 백령도 북방 해상 : 4. 18.(월)



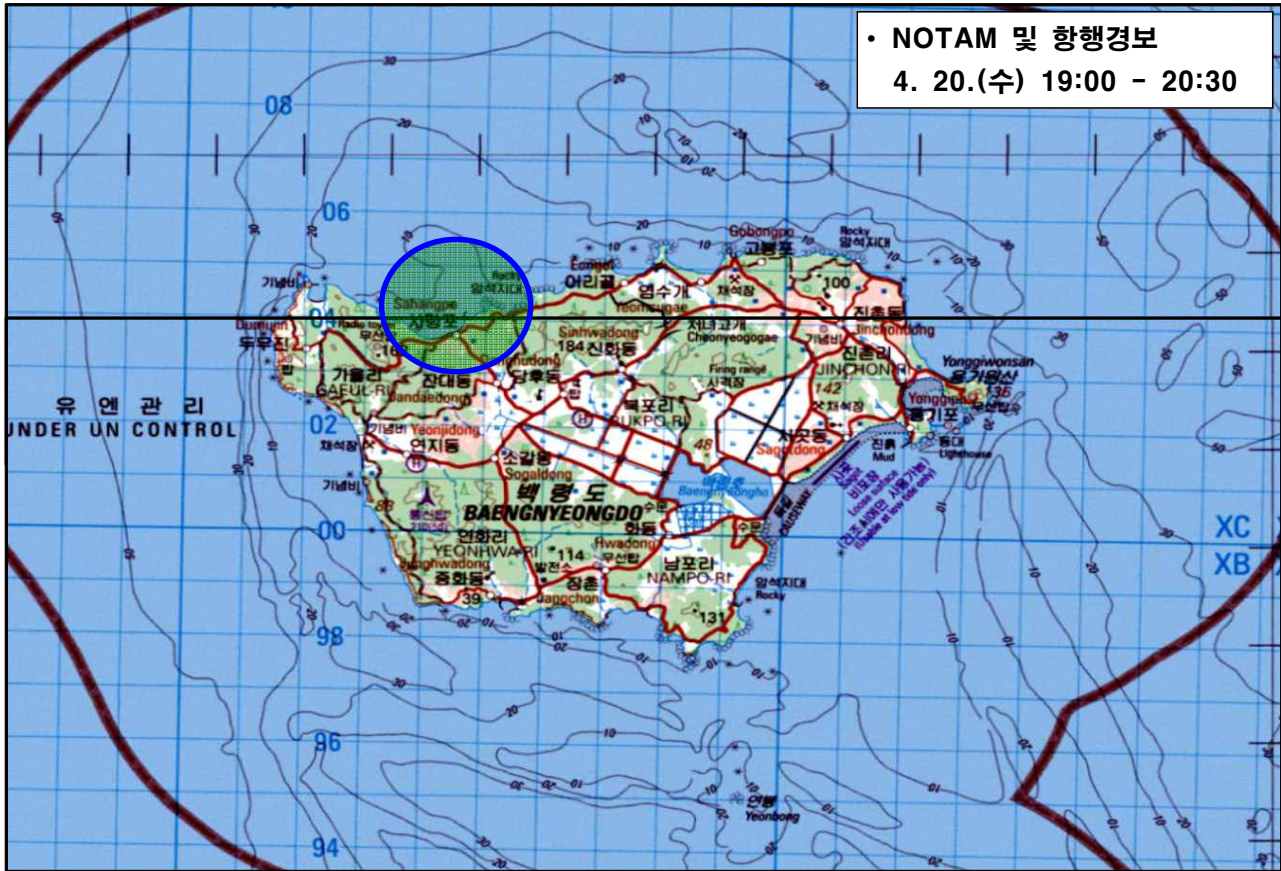
13. 대연평도 서방 해상 : 4. 19.(화), 21.(목)



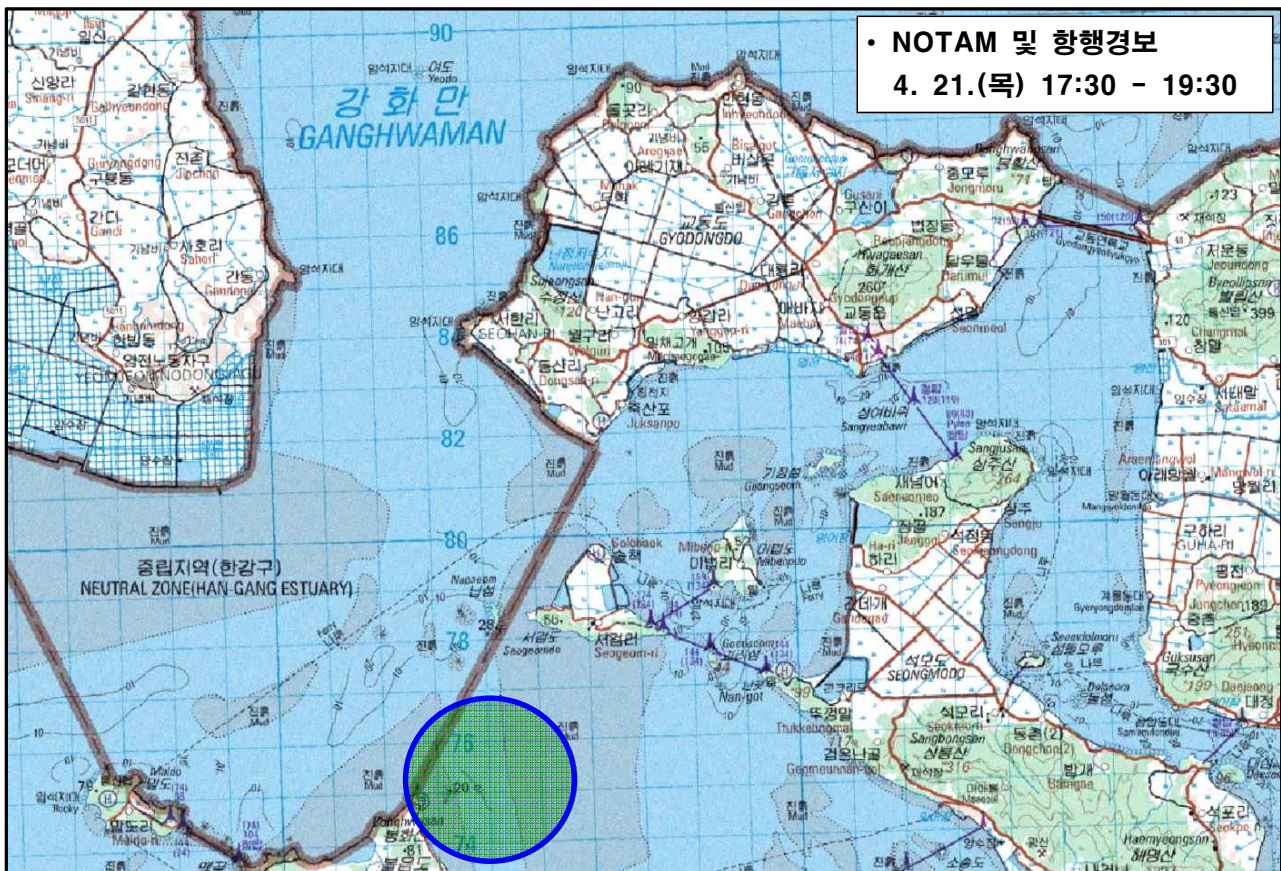
14. 교동도 남방 해상 : 4. 19.(화)



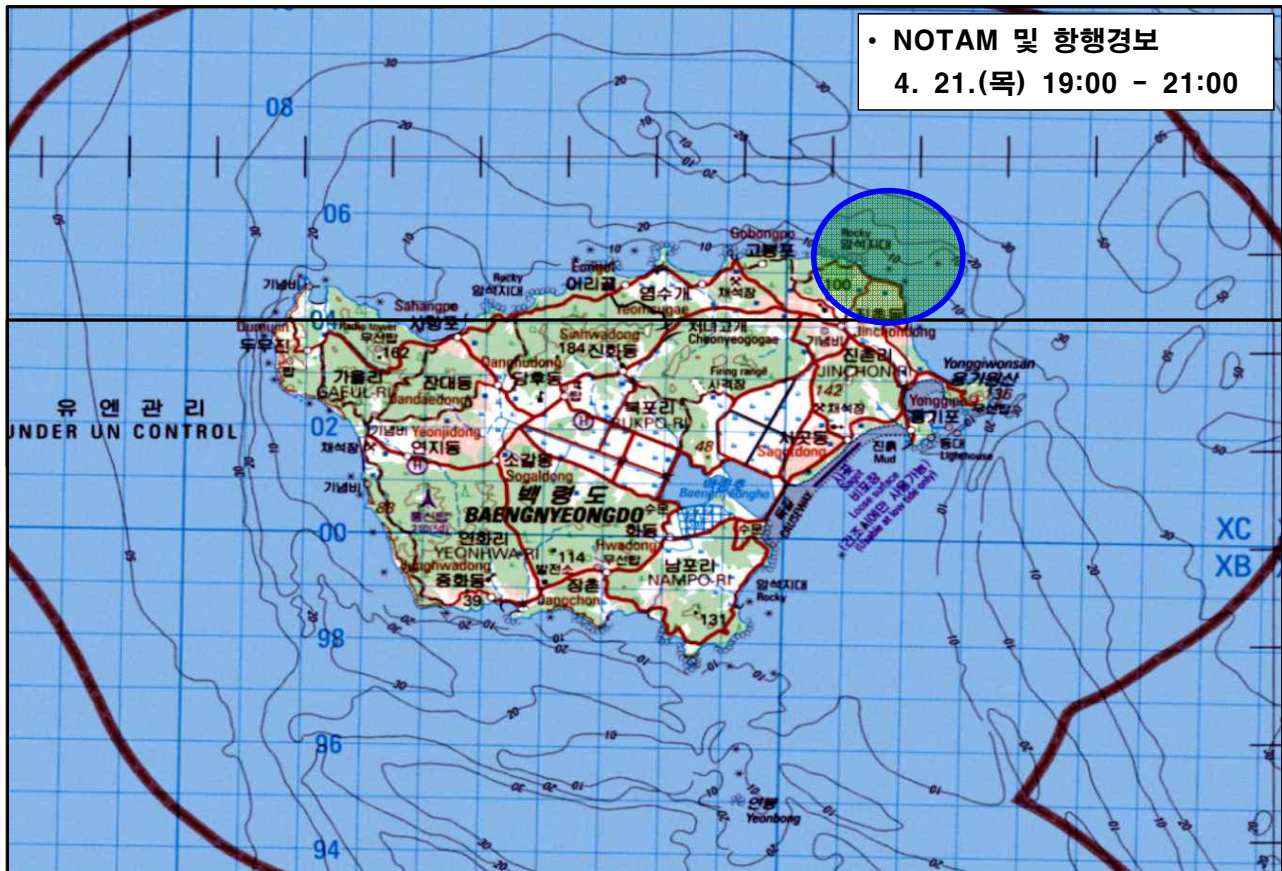
15. 백령도 북방 해상 : 4. 20.(수)



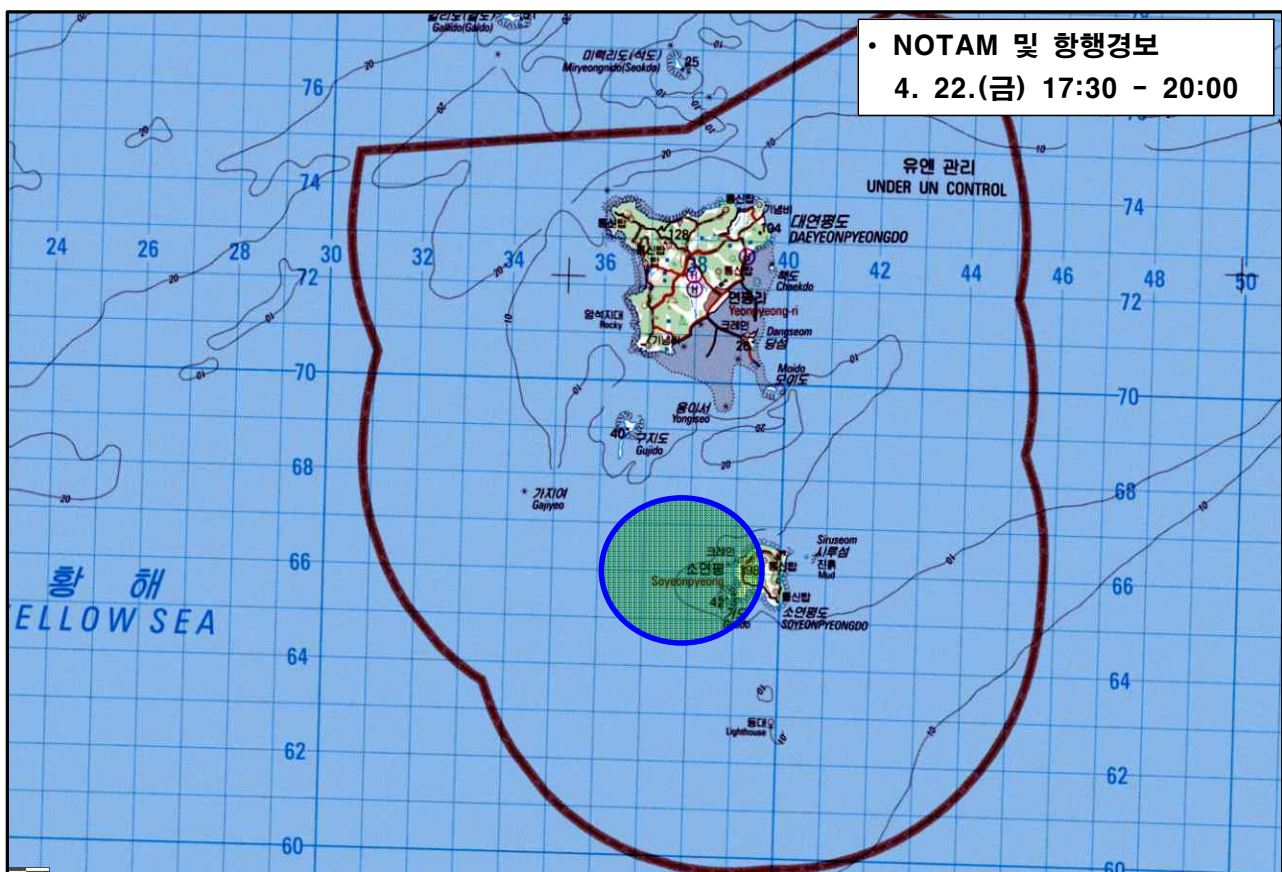
16. 불음도 동방 해상 : 4. 21.(목)



17. 백령도 동북방 해상 : 4. 21.(목)



18. 소연평도 서방 해상 : 4. 22.(금)



19. 백령도 서방 해상 : 4. 22.(금)

